

Agricultural and Landscape Shredders

TL / BE 10 / BKE / BKE REV

VKM / BP 10 / BP 100 / BPR 10 / BPR 100 / BPR 100 PRO / BP 1000

BK / RM / BC 1000 / BCR 1000 / RMS / WS 320 BIO



www.kuhn.com



be strong, be **KUHN**



	TL	BE 10	BKE	BKE REV		
	VKM	BP 10	BP 100	BPR 100	BPR 100 PRO	BP 1000
	BK	RM	BC 1000	BCR 1000	RMS	WS 320 BIO

FOR EACH USE A SHREDDER!

Requirements for shredders, intended for agricultural use and landscape maintenance, differ according to the shredded material, prevailing conditions and operator demands.

In the vast KUHN range of agricultural and landscape shredders you will find a model for almost every situation.

HIGH-QUALITY SHREDDING IS MOST IMPORTANT

Well-shredded crop residues and green spaces are a friend for your soil when fighting weeds, pests and diseases and for rapidly transforming organic matter into humus. This is best achieved, if the residues are shredded very finely, the working height stays uniform and the residues are spread regularly over the surface.

THREE CRITERIA FOR IMPECCABLE SHREDDING

A large diameter rotor, a sufficient overlap between the tools and a high linear tool speed: If these three assets are realized, nothing stands in the way of superb shredding results. KUHN meets these criteria with its rotors, adding also the helical tool layout in order to increase the suction for an improved cut and to distribute the residues evenly over the soil.

Contents

The advantages of shredding	p. 4
KUHN shredders introduction	p. 6
Landscape maintenance (grass) shredders	p. 8
Multipurpose shredders	p. 14
Field shredders	p. 28
Tool choices	p. 38
Technical specifications	p. 40

Some models are not available in all countries. Please always check with your local dealer.

WHY SHREDDING?

On pastures and fields, shredders have multiple areas of operation and agronomic benefits. An adapted crop residue management is an integral part in today's agricultural production systems, especially in conservation agriculture, where crop residues are normally not ploughed under, but only incorporated superficially into the soil.

Fine shredding and a uniform distribution are the key points:

- to accelerate decomposition and conversion into humus,
- to provide favorable conditions for uniform germination of the subsequent crop,
- to control certain pests, diseases and weeds.





Maintain or improve pasture quality

Cattle pick out the best grass to feed on, leaving less attractive species on the pasture. If this low quality grass is not shredded, it will spread through seeds or vegetative propagation. This reduces pasture quality on the whole and consequently also animal productivity.



Effective destruction of intermediate crop covers

Shredding intermediate crops to weaken and destroy them before seeding the next crop is an environmentally friendly alternative to chemical treatment. Think in this regard also of environmental specifications and legal directives, both on regional and international level.



Supporting soil fertility

To improve soil fertility, incorporation of organic matter into the soil is the most important measure. The finer the residue is shredded the bigger is the surface area for microorganisms to attack and transform the organic matter into humus. Strong points for high humus content: improved capability to retain water and fix nutrients, reduced nutrient leaching, improved soil structure and stability, increased biological activity.



For uniform germination of subsequent crop

Finely shredded and homogeneously distributed residues facilitate precise seeding of the subsequent crop. There shouldn't be many undecomposed maize or cereal straw left that could hinder a regular germination and crop growth.



Don't let weeds in

Many weeds migrate from the border into the field and spread over the whole plot if not hindered. An effective precaution measure: shredding grass strips on field borders to lock out brome grass etc.



No home to pests and diseases

In close crop rotations with high shares of maize and wheat, pests and diseases find a wonderful playground to develop. Shredding is an effective instrument to destroy the maize stems, which serve as winter retreats of pests such as the European corn borer. An accelerated decomposition, moreover, ensures that no residues rest on the surface until the next wheat flowering to avoid the transmission of fusarium spores (see table below).

Impact of tillage measures and shredding on relative DON-contents (mycotoxin associated with Fusarium) on wheat.

Source: long-term trial Boigneville - Arvalis, French Agricultural Research Institute

DON (ploughing 100 %)	Shredding Plough	Shredding Rotavator	Semavator	Direct seeding	Shredding Direct seeding
1999 to 2011	100	146		315	
2003 to 2011	100	148	280	416	
2007 to 2011	100	149	255	533	222

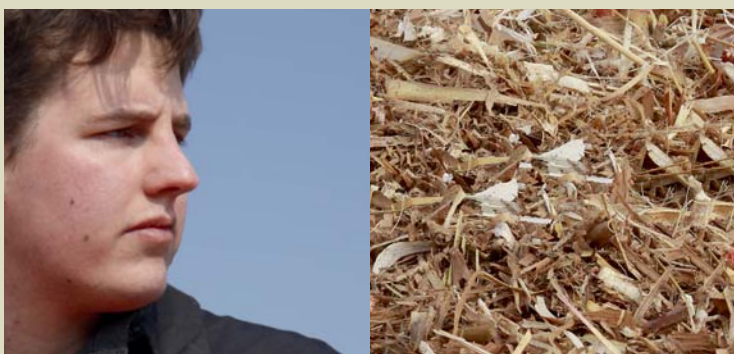


KUHN

AGRICULTURAL AND LANDSCAPE SHREDDERS



SHREDDING QUALITY AND TECHNOLOGY AT ITS BEST



KUHN's agricultural and landscape shredders are developed based on two main challenges:

- robust machines for long service life,
- high shredding quality, meaning complete and fine shredding of all residues on the field, intermediate crop covers, undesirable growth or grasses on pastures.

KUHN ADVANTAGES FOR OPTIMAL SHREDDING

Concrete technical solutions are numerous and versatile as is the product range of our landscape and field shredders. Each one is optimally adapted or adaptable to its intended use and prevailing conditions. But all of them feature common specifics for improved shredding work as well as more robust and reliable machines. More about the KUHN advantages in the overview below!

Some models are not available in all countries. Please always check with your local dealer.



Shredding quality

KUHN solution	Purpose
Helical tool layout*	Increased suction effect: all residues are picked up and enter into the housing
Rotor speed and diameter	Improved suction and maximum aggressivity
Tools	Wide choice of tools for all residues
Counter blade*	Improved shredding as section between tools and counter-blade is reduced
Roller positioned as close as possible to the rotor*	Very precise ground contouring, roller cleaned by tools, residues ejected over the roller for faster decomposition

Machine robustness

KUHN solution	Purpose
High resistance steel	Ensured strength and stability
Linkage frame	Extremely robust
Bronze alveolate bearing shells / pins stopped from rotating	Increased rigidity, higher resistance against mechanical constraints, reliable articulations
Sheet metal lining*	Increased resistance to wear and shocks
Number of belts	Optimum power transmission
Powerband belts	Reliable and lower maintenance costs than basic belts
Automatic belt tensioning*	No risk of slippage
NON-STOP safety*	Faced with an obstacle, shredding unit pivots to the rear and returns automatically

*Standard and optional equipment may vary from model to model.

A VERSATILE FAMILY PRESENTS ITSELF

From landscape maintenance work in parks and gardens to the upkeep of all kind of green spaces and orchards: The KUHN range of landscape shredders will perform excellently in low to medium amounts of residues. With its short tools and adapted casing size, the machines are perfect to work in grassy areas.

Series	TL	BE 10	BKE	BKE REV
Type of linkage	rear	front or rear or reverse drive	rear	front or rear
Intensity of use	regular	professional		
Type of residue	grass			
Models available	120 - 150 - 180	14 - 16 - 18 - 20	150 - 180 - 210 - 230 - 250	



TL 120 / TL 150 / TL 180:

Rear shredders of 1.19 – 1.78 m working width for regular use in park and garden maintenance on compact tractors;



BE 14 / BE 16 / BE 18 / BE 20:

Very adaptable shredders (rear, front, reverse drive) with working widths from 1.40 to 2.00 m for professional use (villages...);



BKE 150 / BKE 180 / BKE 210 / BKE 230 / BKE 250:

Vast choice of models for quick and efficient green space management with 1.53 – 2.50 m shredding width;



BKE 150 REV / BKE 180 REV / BKE 210 REV / BKE 230 REV / BKE 250 REV:

Reversible versions of the BKE shredders for complete uptake of residues by the unit;

Some models are not available in all countries. Please always check with your local dealer.



TL 120 150 180

SMALL IS BEAUTIFUL!

KUHN TL shredders are intended for the maintenance of parks and gardens. They have been developed for use with compact tractors. Thanks to their design and specific tools nothing stands in the way to high-quality mowing of lawns and green spaces anymore.



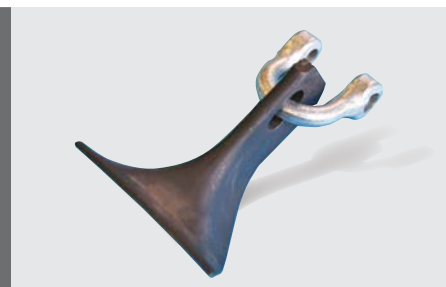
DESIGNED FOR COMPACT TRACTORS

Attached on a three-point hitch, cat. 1 or 1N, TL shredders are adapted for the use on compact tractors. TL 150 and 180 are available with an attachment with offset possibility.



IDEAL FOR GREEN SPACES

- Height control by roller
- Forward roller position:
 - for perfect ground following,
 - roller self-cleaning by means of the tools,
 - projection of shredded residues over the roller to prevent compacting shredded grass and to favor its decomposition for a perfect result.



HIGH-QUALITY MOWING AND SHREDDING

Specific articulated scoop knives care for superb grass mowing operations, as does the high number of tools. Counter knives in the casing enhance the shredding quality.



BE 14 16 18 20

THE ADAPTABLE ONE FOR PARK AND GARDEN PROFESSIONALS

Maintenance work in parks and grassland are the core working area of the new BE shredders. Designed for use with garden or small tractors, they can be either hitched on the tractor's rear or front linkage or driven in reverse drive position. Available in four working widths from 1.40 to 2.00 m, these machines impress by their versatility.



ONE SOLUTION FOR ALMOST EVERY NEED!

The big trump card: KUHN's BE shredders are available in rear or front mounted as well as reverse drive version. For use on front linkage or with reverse drive tractors, a kit is available to modify the linkage. In all cases, the central gearbox is supplied with two input points and integrated free wheel (540 and 1,000 min⁻¹).

- 1. Standard rear attachment of the machine
- 2. BE shredder in reverse drive position

Some models are not available in all countries. Please always check with your local dealer.



EVEN MORE LINKAGE CHOICES

As standard you can choose between a fixed linkage with two possible positions or hydraulic offset.

PATENT



THEY WORK LIKE A LAWNMOWER!

Standard hammer knives with specific patented design to avoid rotor damage.



3

3. AN EXCELLENT GROUND FOLLOWER

The working height is set by a 160 mm diameter roller with fixed ends, mounted on double-row ball bearings with greasing points.

It is positioned very close to the rotor. Thus, it ensures the best possible adaptation to the terrain. Another advantage: The roller is automatically cleaned by the shredding tools!



4

4. QUICK DECOMPOSITION OF RESIDUES

Thanks to the optimized casing and roller position, shredded grass is ejected over the roller and consequently can't get compacted. It is evenly deposited in the rear, where the decomposition can start immediately without delay.

BKE | BKE REV | 150 | 180 | 210 | 230 | 250

THE STANDARD IN THE G



The BKE and BKE REV ranges: A vast choice of models with five working widths in rear and reversible versions are available. These two ranges provide the standard KUHN machines, when it comes to maintaining grassy areas such as parks, green spaces and pastures.

OPTIMIZED DESIGN FOR SUPERIOR WORK

The optimized shredding box profile ensures that large volumes of plant residues can be shredded while limiting power consumption. Equipped with a roller positioned very close to the rotor, the machine follows the ground perfectly and achieves improved decomposition.



RASS SHREDDER RANGE



LINKAGE

Two types of linkage can be used on BKE and BKE REV shredders:

- a fixed two-position coupling (centred and offset),
- linkage with hydraulic offset.



**LESS WEAR.
IMPROVED PROTECTION.**

1. ADDITIONAL PROTECTION

The bolted 4 mm thick sheet metal lining inside the casing minimizes wear and provides protection against foreign bodies.

2. FOR INTENSIVE WORK

Select the roller with removable ends and fitted with reinforced roller bearings that only need minimum maintenance and reduce replacement costs.



**FOR EVEN BETTER GROUND
FOLLOWING**

3. ON IRREGULAR GROUNDS

The skids combined with the roller protect the side walls, improve the machine's stability and provide additional guidance.

4. FRONT WHEELS

Intended for the BKE REV in front position, the extra front wheels improve the ground following of the machine.



Some models are not available in all countries. Please always check with your local dealer.

A TRULY MULTIPURPOSE RANGE

With KUHN multipurpose shredders, you have a range of shredders suitable for maintaining pastures and fallow land, but also for destroying intermediate crops and plant cover.

Series	VKM	BP 10 BPR 10	BP 100 BPR 100	BPR 100 PRO	BP 8300 BP 8320 BP 8340
Type of linkage	rear	rear or reverse drive (on BPR - quickly changed)		reverse drive	front/rear (8300); triple rear (8320) or reverse drive (8340)
Main applications	undergrowth, pasture, fallow land	pasture, fallow land (for light work)	undergrowth, pasture, fallow land		pasture, fallow land, crop residues
Models available	210 - 240 - 280 - 305	280 - 305	210** - 240 - 280 - 305 (**only on BPR)	280 - 305	830 (can be used with BPR 100 PRO)



VKM 210 / VKM 240 / VKM 280 / VKM 305:

Optimally manage pastures and grass regrowth in working widths from 2.09 to 3.03 m;



BP 28 / BP 30 BPR 28 / BPR 30:

The range for lighter works with either rear (BP) or reversible versions (BPR) with 2.79 and 3.03 m working width;



BP 240 / BP 280 / BP 305 BPR 210 / BPR 240 / BPR 280 / BPR 305:

The standard multi-purpose KUHN shredders in rear (BP 100) and reversible versions (BPR 100) with working widths from 2.10 to 3.03 m;



BPR 280 PRO / BPR 305 PRO:

Designed for intensive work with tractors of high power requirements;



BP 8300 / BP 8320 / BP 8340:

2 side shredding units combined with central unit shredder for a large working width of 8.30 m; front/rear triple combination BP 8300, rear mounted triple combination BP 8320, BP 8340 with reverse drive.



VKM 210 240 280 305

EASY MANAGEMENT FROM GRASS TO BRUSHWOOD

VKM shredders are designed primarily for use in pastures and fallow land, but can also be used for shredding prunings.

With the VKM, find an adaptable multipurpose shredder best suited to your needs!



HIGH-QUALITY SHREDDING

The helical layout of tools on the VKM rotor is optimized for:

- smooth rotation without jolts,
- good suction for a clean cut,
- even distribution of shredded residues for improved decomposition.



THE RELIABILITY OF THE ROLLER WITH REMOVABLE ENDS

- Double row of ball bearings for increased longevity, perfect sealing through chicanes and greasing system.
- Roller fitted closest to the rotor for efficient ground hugging and selfcleaning by means of the shredding tools.



A COMPACT UNIT

The VKM is equipped with an offset by sliding tube (mechanical as standard, hydraulic as option).

This design allows the machine to gain in compactness with a centre of gravity close to the tractor.



A «UNIVERSAL» DESIGN

The low construction with rounded edges, internal rotor bearings and smooth sides with no sharp edges facilitate shredding almost everywhere, including under trees and vines. It can also be equipped with raking tines for ligneous residues. With an adjustable rear hood, the shredding degree can be adapted to the amount of residues.

SHREDDERS TO SATISFY BASIC NEEDS

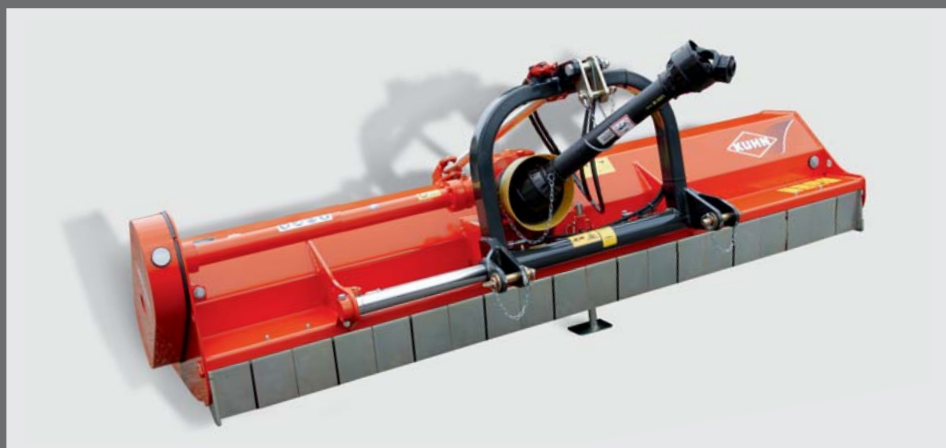
WHEN SHREDDING BECOMES EVERYDAY WORK

The new BP 10 series shredders are designed for shredding all kind of grassy areas from managing weeds on field borders to maintenance work on pastures or the upkeep of green spaces in parks and gardens. Individual crop and livestock farms as well as local authorities can benefit from its superb cost-performance ratio, when they are looking for a multipurpose shredder for everyday shredding operations.



FIXED LINKAGE

With the fixed central frame the gearbox is also positioned in the machine's centre. The hitch pins are supported at each end.



TWO VERSIONS FOR DIFFERENT NEEDS

SHIFTABLE LINKAGE

The linkage frame can be shifted mechanically or hydraulically on a sliding tube and comes with an off-centre gearbox to provide an extended offset of up to 45 cm to the right. Frame and top link are connected via an articulated rod for improved ground contouring.



A ROBUST STRUCTURE

Long service life and resistance against impacts is an important issue for us. Therefore, the casing structure of BP shredders consists of 6 mm thick metal with 8 mm thick side walls. The two counter-blades (1 notched & 1 smooth) are welded on the casing.

PERFORMING SHREDDING UNIT

Helical layout for improved residue suction and homogeneous spread – robust tool holders and anti-rotation attachment screws - rotor speed of 1,960 min⁻¹ for clean shredding – driven by four high-capacity XPB V-belts: Nothing stands in the way of a long-lasting high performance.

CONTROLLING CUTTING HEIGHT

For efficient shredding and plant cover preservation, it is essential to have control over the cutting height. The BP shredders can either be fitted with:

- a 220 mm press roller with either fixed or removable ends positioned very close to the rotor for improved ground adaptation, grass ejection over the roller and automatic cleaning by the tools,
- semi-pivoting wheels fixed onto the shredder casing.

AN ALLY IN MAINTENANCE

Offset possibility, adjustable rear hood, different tools to choose from: Owing to its versatility, this shredder is able to meet very varied applications such as maintenance of pasture land, orchards, unsown areas, but also shredding crop residues or intermediate crops.





A STRUCTURE TO LAST

The hitch frame design, a lasting structure of assembled parts, is especially robust. As standard, the BP 100 models can be offset mechanically by 58 cm to the right.

This is obtained using a sliding double tube system (one lower and one upper tube). This design reduces the machine overhang and limits stress on the hitch frame when working in offset position.

The hitch pins are blocked and thus stopped from rotating. The upper link is equipped with a longhole for improved following of irregular grounds.



3



APPROACHING PERFECT SHREDDING:

- rotor with eight rows and helical layout of tools for increased residue suction and perfect distribution over the ground;
- two counter-knives for impeccable shredding;
- possibility to fit hammer knives or universal knives.



A ROBUST AND MULTIPURPOSE HOOD

The structure is made up of two beams including a welded sheet metal lining for increased resistance. The rear hood is adjustable. Adjust it to the minimum for shredding slightly dense vegetation or maximum product recycling. Adjust it to the maximum when shredding dense vegetation or if you want to work faster, while limiting the power input.

WORKING HEIGHT UNDER CONTROL

- A BP 100 can be fitted either with:
- a roller of Ø 220 mm with removable ends that is positioned close to the rotor for precise ground following,
 - or semi-pivoting wheels fitted on the side walls.

A FAULTLESS DRIVE

- The BP 100 features:
- a gearbox for tractors of maximal 175 hp,
 - an automatic belt tensioning system,
 - three to five belts depending on the model.

Some models are not available in all countries. Please always check with your local dealer.



THE ART OF MAINTAINING GRASSY AREAS!

The BPR series 10 shredder is designed for individual farms owning tractors of up to 150 hp. Its main purpose is to maintain meadows and uncultivated grassy areas.



MAINTAINING GRASSY

Owing to its front/rear mount options and lateral offset capability, it is the perfect shredder for farms with differing conditions and difficult-to-access corners. It is available in widths of 2.80 and 3.05 m.



A ROBUST HOOD

The body consists of 6 mm thick metal sheeting for the outer structure and 8 mm thick side walls. Internally, the hood is fitted with two welded counter blades.



PROVEN WORK HEIGHT SOLUTIONS

There are two rollers available for height control:

- either a standard roller Ø 220 mm with fixed ends,
- or a roller with removable ends Ø 220 mm.

In both cases, the roller is positioned as close as possible to the rotor for effective ground hugging, self-cleaning by the tools and a better decomposition of the residues.



THE ROTOR DESIGN YOU ARE LOOKING FOR

The machine is equipped with a rotor featuring eight rows of tools 465 mm in diameter. The helical layout of the tools ensures perfect suction of residues to be shredded and high-quality ground distribution of the shredded waste.



ROTOR DRIVE EASY TO MAINTAIN

The rotor drive includes:

- a central gearbox with double input including a free wheel for tractors of up to 175 hp.
 - a lateral drive using four belts.
- For fast, easy control of belt tension, the guard is attached by a single screw.

Some models are not available in all countries. Please always check with your local dealer.



1. A DOUBLE-PURPOSE LINKAGE

The double attachment frame can be front or rear mounted by simply inverting the transmission.

2. LATERAL OFFSET

The BPR 28/30 series provides a hydraulic lateral offset of the hitch frame of 45 cm fitted as standard. For an increased reliability and compact machine dimensions, it is displaced by sliding it over two tubes guided on Teflon rings.





ADDING VERSATILITY

With a reversible BPR shredder you can enjoy the benefits of maintaining pastures and fallow land! But it will also enable you to shred crop residues. When in frontal position, the tractor does not drive over the plants providing smoother shredding action. A BPR fits all tractors: It is coupled at the front or back. Work can also be done with a front and back combination including the KUHN verge maintenance equipment or hedge and grass cutters.



OFFSET BY SLIDING MOVEMENT

The sliding offset of 58 cm allows it to reach the most difficult to access corners. The BPR 100 models are equipped with a hydraulic offset as standard.



PERFECT GROUND FOLLOWING

For controlling the working height, the BPR 100 features a 220 mm Ø roller with removable ends for an easier maintenance. It is positioned closest to the rotor to ensure:

- perfect ground following,
- self-cleaning of tools,
- easy rolling in all situations.



A FAULTLESS DRIVE

The BPR 100 features:

- a gearbox for tractors of up to 175 hp,
- an automatic belt tensioning system,
- three to five belts depending on the model.



Some models are not available in all countries. Please always check with your local dealer.

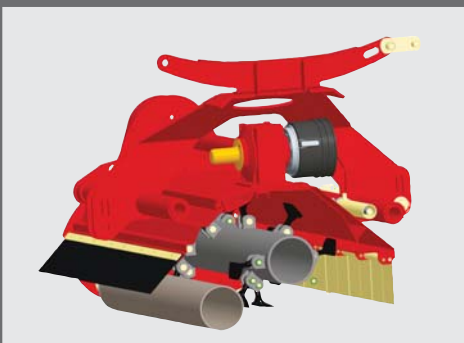


HIGH-QUALITY SHREDDING!



A PIVOTING HOOD FOR MOST WORKING CONDITIONS

The pivoting hood provides greater versatility. It can be adjusted according to the quantity and type of plants to be shredded.



SHREDDING CASING: LONGER LIFE

The standard model of shredding casing is reinforced by a 4 mm lining for longer service life, and it is equipped with two counter blades (one notched and one smooth) for fine shredding.



EFFECTIVE ROTOR

The rotor with eight rows of tools efficiently sucks up the residues to be shredded, also those pressed against the ground, for impeccable shredding quality.

BPR

280 PRO

305 PRO

FIT A BPR 100 PRO IN FRONT FOR POWERFUL COMBINATIONS

BPR 100 PRO models, available in widths of 2.80 and 3.05 m, can be easily attached to the front or rear. It has been specifically designed for intensive use with high horsepower tractors with its powerful gearbox and a higher attachment than the BPR 100. It is intended to shred everything from grass to crop residues and cover crops.



HIGH OUTPUTS FOR CONTRACTORS AND LARGE FARMS!

Front-mounted BPR 280 and 305 PRO shredders are the ideal partners of rear BP 8300 large-width shredders, the BPR 280 PRO is additionally for use with the BP 8340. Identical tools, tool holders and number of counterknives make a homogeneous shredding work possible.





ADAPTED FOR INTENSIVE WORK WITH HIGH POWER TRACTORS

The BPR 100 PRO models are designed for tractors of up to 230 hp. The attachment point is raised to allow the attachment to powerful tractors. The top link remains floating to allow improved ground following. The robust lateral drive is made up of five rib Powerband belts, featuring an automatic tensioner to withstand the stresses of the most extreme working conditions.



DESIGNED FOR HIGH-QUALITY SHREDDING

The 465 mm diameter rotor is fitted with heavy hammer knives which are perfectly adapted for shredding pasture land, cover crops and woody crop residues. For especially fine shredding, the BPR 100 PRO is fitted with two counter knives with a third available on option. A pivoting rear hood makes an adaptation to different volumes of residues possible.



A VERSATILE IMPLEMENT

The BPR 100 PRO can be easily attached to the front or rear of your tractor. As the BPR 100 models, also the BPR 100 PRO range are equipped with a 580 mm hydraulic offset as standard. The shredder slides on two tubes of 70 mm diameter, including Teflon bushes and greaser for more reliability.

BP

8300

8320

8340



IMPECCABLE SH

Whether you are a contractor or owner of a large farm, these multi-purpose BP 8300, BP 8320 and BP 8340 shredders are made for you. As triple combination with a BPR 280 PRO or BPR 305 PRO (on BP 8300 and BP 8340), the output rates are impressing at a working width of 8.30 m. Mainly designed for maintaining pastures, fallow land and grassy areas, its versatility is that it can also shred cover plants (mustard, phacelia...) as well as crop residues or maize stubbles. As no vegetation is run over by tractor wheels, residues can be easier sucked into the shredding units.



REDDING OUTPUT!

HIGH-QUALITY SHREDDING RESULTS

The 465 mm diameter rotor with helical positioning of tools, combined with a body equipped with a pivoting rear hood means that the large width shredders can shred a large quantity of vegetation, even at high speed. Ejected above the press roller, the residues are not compacted, thus accelerating decomposition rates.



EXCLUSIVE

A SHREDDER WITH WEIGHT REDUCTION AND NON-STOP SAFETY!

The BP 8300, 8320 and 8340 have a frame which is unique on the market. It is equipped with LIFT-CONTROL technology used on the widest KUHN mowers and with characteristics which are exclusive on a shredder.

- In detail:
- Pendulum type articulation on both shredding units for excellent ground hugging.
 - The shredding units are equipped with a weight-reduction system reducing stress on the roller.



- Non-stop safety is combined with a shredding unit lift system to provide the machine with optimal protection against obstacles when moving rearwards.
 - Lift system is built into the frame for easy manoeuvring.
- The results: perfect shredding and reduced costs!



RELIABLE IN MOST INTENSIVE APPLICATIONS

To cope with the most intensive jobs, these shredders are equipped with:

- a gearbox designed for tractors of up to 330 hp,
- reduced maintenance SFT secondary PTO shafts,
- a drive for each shredding unit using five SPBX belts,
- an automatic belt tensioning device.

A «PRO» STRUCTURE

The two shredding units are equipped with:

- welded sheet metal lining for optimal protection against wear and impact,
- two counter blades for fine shredding (third optional),
- a pivoting rear hood to adapt to all types of working conditions,
- a press roller with removable ends 220 mm in diameter,
- lateral skids,
- rotor with hammer support axles (20 mm diameter) made of special treated steel.

Some models are not available in all countries. Please always check with your local dealer.



BP 8320: TRIPLE REAR COMBINATION

The new BP 8320 is a triple shredder combination with all three units located in the rear. In this way you can benefit from a large working width, also if your tractor is only equipped with a rear PTO.



BP 8340: IN REVERSE DRIVE

Due to an easier attachment and improved visibility during work, the reverse drive version of the BP 8300 is very comfortable in its use. Monitoring all three units at once is no problem.



A RANGE TO COPE WITH HIGH AMOUNTS OF RESIDUES

Well-shredded crop residues are a friend of you and your soil, fighting pests and diseases and rapidly transforming the organic matter into beneficial humus structures. Discover the KUHN range of field shredders, which provide fine shredding and good spreading for all necessary jobs in the field!

Series	BK	RM	RM R	BC 1000	BCR 1000	RMS 820	WS 320 BIO
Type of linkage	rear				front, rear or reverse drive	rear	front or reverse drive
Main applications	fallow land, intermediate crops and crop residues	intermediate crops and crop residues					harvest of energy crops
Models available	230 - 280 - 320	240 - 280 - 320 - 400 - 450	480 - 610	2800 - 3200	2800	820	320



BK 230 / BK 280 / BK 320:

Shredder series for individual mixed crop farms with working widths of 2.30 m, 2.80 m and 3.20 m; with mobile hood for maintenance work;



RM 240 / RM 280 / RM 320 / RM 400 / RM 450:

Field shredders proven worldwide on cereal farms and in machinery cooperatives with working widths from 2.36 to 4.32 m;



RM 480 R / RM 610 R:

Even more work output in foldable version for easy road transport with working widths of 4.80 and 6.10 m;



BC 2800 / BC 3200 / BCR 2800:

These new models with working widths of 2.79 and 3.23 m, respectively, represent the best synergy of robustness and high quality shredding. The reversible BCR 2800 answers the need for a high capacity front model;



RMS 820:

An outstanding rigid machine for large farms with shredding width of 8.20 m and adapted to very high power tractors;



WS 320 BIO:

Front-mounted shredder with built-in windrower for energy crops harvest, can be used in combination with baler. Two actions in one pass!

BK

230

280

320



THE ALLROUNDER FOR MIXED FARMS

BK shredders are intended for mixed crop farms. Available in three working widths, 2.30 m, 2.80 and 3.20 m, they are designed for efficient shredding of crop residues, straw, maize or sunflower stalks, set-aside and pasture land.

THE MEANING OF EFFICIENT SHREDDING

Shredding improves the decomposition of crop residues. A satisfying result is achieved, if the majority of residues is less than 5 cm long, the shredding height is uniform and the residues distributed regularly over the soil after shredding. With KUHN shredders you can count on proven solutions to achieve these requirements.



IMPORTANT POINTS FOR AN INCREASED SERVICE LIFE

- The coupling device ensures that the tractor/ tool link is very rigid.
- The free wheel is integrated in the gearbox as standard.
- A double skinned hood is available on option.



ROTOR FOR PERFECT SHREDDING

The high linear speed combined with the high level of overlap between tools ensures high-quality shredding. Moreover, you can shred large quantities of residues with the large rotor diameter.



SHREDDING TOOLS

The rotor is fitted with four rows of tools to choose from:

- universal knives with stubble pallets to lacerate the residues better: for stubble and cereals.
- hammer knives for woodier material: maize and sunflower stalks, maintenance of hay fields.



PERFECTLY CONTROLLED SHREDDING HEIGHT

Two working height control devices are available for these machines:

- semi-pivoting wheels,
- roller.

Wide height-adjustable skids are available as option.

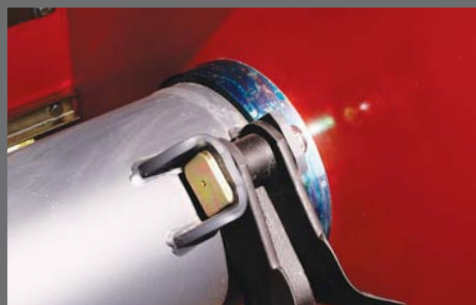


EASY TOOL EXCHANGE

The rear hood can be lifted manually for better access to the rotor. Therefore the shredding tools can be changed in total ease.



MAKE YOUR LIFE EASIER!



LIMITED MAINTENANCE

You will benefit from the maintenance-free rotor thanks to bearings that are greased for life. The free wheel in the central gearbox needs no maintenance as well.



HYDRAULIC OFFSET

BK 230 and BK 280 shredders can be fitted with hydraulic offset of 40 cm to the right to shred in fields with obstacles: orchards, rocks, etc.



LENGTHWAYS TRANSPORT

The BK 320 can be transported lengthways for passing narrow paths and roads at ease.



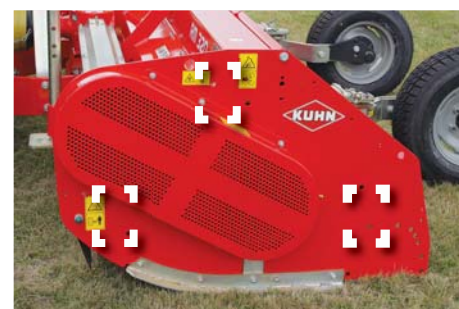
RM RM R FIELD SHREDDERS

DESIGNED FOR INTENSIVE USE

The RM shredders with horizontal axis, both rigid and foldable, are adapted for shredding crop residues such as cereal straw, sunflower or corn stalks, but also for the maintenance of pastures and meadows. Still, the main areas of operation will be on cereal farms, in machinery cooperatives or for contracting work.

THREE CRITERIA FOR IMPECCABLE SHREDDING QUALITY

A large diameter rotor, a sufficient overlap between the tools and a high linear tool speed: Those are the three most important things to think of when designing a shredding rotor. KUHN meets these criteria with its rotors, adding also the helical tool layout in order to increase the suction for an improved cut and to distribute the residues evenly.



RELIABLE HECTARE AFTER HECTARE

The RM shredders have proven themselves in the field for years, as did their casing that is exceptionally robust. The secret: It's made up of three large section beams and can therefore resist the most difficult conditions. For additional protection against stones all RM models are fitted with a 4 mm bolted sheet metal lining.



CONTROL THE SHREDDING HEIGHT!

The shredding height is adjusted either by:
 - pivoting wheels adjustable in height and laterally for shredding crop residues,
 - or by a roller for management of set-aside land and grass land.
 For improved contour following, the 3-point linkage is in "floating" position.



A TOOL FOR EACH NEED



1. FINE SHREDDING OF ALL TYPES OF PLANT RESIDUES

The Y-knives with stubble pallets will lacerate the residues for faster decomposition. They also provide an improved suction especially of lodged crops into the hood.



2. A CLEAN CUT FOR THE MOST LIGNEOUS PLANTS

The long hammer knives are adapted for shredding grass, maize or sunflower stalks.

RM 240 280 320 400 450

RIGID VERSIONS FOR MORE COMFORT IN DIFFICULT CONDITIONS



RM shredders are used on many farms worldwide. Their reputation is the best proof of their strength and shredding quality.

The rigid versions are available in working widths from 2.40 to 4.50 m.

EXCLUSIVE

A SINGLE ROTOR OF 4.50 M!

The RM 450 shredder is a single rotor machine. That means 4.50 m working width without non-shredded areas for an uncompromised quality of work!



FOR MORE COMFORT DURING TRANSPORT

For road safety, some RM shredders (depending on the width) can be transported lengthways. The machine does not exceed the tractor width.



A DRIVE ADAPTED TO HIGH POWER

Thanks to their double drive, the power transmission on RM 320, RM 400 and RM 450 models is better distributed to the drive components.



FOR AN EASY TOOL EXCHANGE

The rear hood can be lifted manually for easier access to the rotor for maintenance. Therefore the shredding tools can be changed in total ease.

RM 480 R 610 R

FOLDABLE VERSIONS FOR MORE PRODUCTIVITY!

With the foldable RM R range, an exceptional work output is sure when shredding with these sturdy machines of 4.80 and 6.10 m working width! Thanks to their hydraulic folding, travel time between fields is also limited.



HIGH RESISTANCE TO STRESS

The main frame is made up of heavy profiles that ensure good rigidity and mechanical strength. Moreover, each half shredder is fixed to the main frame with a bushed pivot pin that cannot rotate and therefore prevents the whole attachment from wear.



TOTALLY SAFE ON THE ROAD

The two shredder units fold and unfold hydraulically and lock in place for total safety during transport. Lighting and signalling belong to the standard equipment.



CENTRAL STRIP MANAGED EFFECTIVELY

To reduce the central strip to a minimum, we have optimized the suction at the center of the machine. The flux of residues is directed into one of the units with an increased number of tools in this area and with a fitted divider share.

As option a hydraulically driven disc can be mounted at the front between the two units to fully remove the residue strip in-between.



Some models are not available in all countries. Please always check with your local dealer.

RM BC 2800 BC 3200 BCR 2800

THE BEST ALLIANCE OF ROBUSTNESS AND WORK QUALITY

These new field shredders with 2.79 and 3.23 m working width, respectively, are destined for cash crop farms, machine cooperatives and contractors. They have been especially designed for work in intensive conditions with voluminous crop residues and for tractors of up to 300 hp.



ENSURED ROBUSTNESS

The new casing design ensures reliable processing of many hectares. Large section beams, a performing belt drive and the large diameter wheels reinforce these models that will undoubtedly win you over.

HIGH-QUALITY SHREDDING

These machines shred all types of crop efficiently. They are fitted either with hammer knives or universal knives with stubble pallets positioned helically on the large diameter rotor. The counter-knives inside the casing provide a perfect finish.



BCR 2800: THE VERSATILE SOLUTION

This reversible model can be mounted with either a single or twin linkage allowing it to be fitted either on the front or rear of the tractor.



RMS

820

AN OUTSTANDING SHREDDER FOR LARGE CEREAL FARMS!

Some basic numbers about this shredder already speak for itself:

- working width of 8.20 m,
- licensed for high-power tractors up to 450 hp,
- with a weight of 6,600 kg.

This is the right shredder for extra-large surfaces that are shredded intensively, exposing the machine to high loads and strains.

Apart from that you can count on the familiar KUHN assets as a large-diameter rotor with helical tool layout and high tool speeds for superior shredding quality. The shredding height is controlled by four pivoting wheels.



PRACTICAL AND SAFE TRANSPORT

For a machine of this size innovative transport solutions have to be found. On the RMS 820 both the hydraulic transport device and the hydraulic drawbar are fitted with double acting cylinders with pilot-operated valves. Both safe and practical!



IT'S ALL ABOUT RELIABLE MACHINES WHEN THEY SHOULD EAT UP THE HECTARES!



1



2

1. A STURDY CHASSIS

The welded chassis is made up of four beams for increased rigidity: one front, one upper, and two lower beams. Also the structure components are very thick and an interchangeable sheet metal lining is bolted to the chassis.

2. A ROBUST ROTOR DRIVE

Thanks to their double drive, the power transmission distribution to the drive components is improved. At each side the rotor is driven by six SPCX high-capacity belts, which are fitted with an automatic tensioning device.

Some models are not available in all countries. Please always check with your local dealer.



WS

320 BIO

NOT ONLY SHREDDING, BUT HARVESTING!

The WS 320 BIO is a specialised energy crop shredder designed to harvest crops. It can work in combination with a baler - an absolute innovation on the market. It is front-mounted with a built-in windrowing device designed for harvesting high-volume crops, such as Miscanthus or Sorghum. If used together with a baler, only one driver is needed to shred, swath and bale the crop!

CONVINCING ADVANTAGES OVER CURRENT HARVESTING SYSTEMS

When compared to self-propelled forage harvesters or mowing and baling in separate steps, the WS 320 BIO stands out with following assets:

- only one person necessary for the entire harvesting process;
- simpler transport logistics;
- less space needed for bale storage especially if baled with a high-density baler into square bales;
- reduced fuel requirements;
- less soil compaction due to less passages of large machines over the field.



EASY GRASP

For a better grasp of the crops, which are generally tall and dense, the shredder has a hydraulically adaptable front cover and reel. The WS 320 BIO is suitable for all types of vegetation with high volumes. It can even work in difficult conditions with lodged crops.



ADAPT SHREDDING FOR CROP HARVEST

The rotor speed is reduced to receive shredding lengths of more than 15 cm. Only then they are able to be baled. If you need finer shredding, we recommend the use of a shredder under the baler. The roller can be adjusted to provide the desired cutting height, from 4 to 15 cm.



ONE PASSAGE, THREE OPERATIONS

Windrowing is provided by a worm screw attached behind the rotor. This is driven by a hydraulic motor connected directly to the tractor. Rotation speed can be adjusted to adapt to the working conditions (quantity of material, forward speed). The shredded product is discharged uniformly via a central opening at the back of the shredder. This avoids crushing by the tractor wheels. Baling, in combination or not, will be all the easier.

Some models are not available in all countries. Please always check with your local dealer.

CHOOSE THE

*Not possible to fit other tools







Assembly possible at the factory



Contact KUHNS PARTS



Assembly not possible

Type	Residue	Tool
HAMMER KNIVES Grass/wood/woody residue	Standard grass	Hammer knives 
	Grass in difficult conditions (stony,...)	Articulated hammer knives 
	Grass and wood residues (vine shoots, cut wood)	Heavy hammer knives 
	Fallow land, woody crop residues	Long hammer knives 
UNIVERSAL KNIVES Undergrowth/crop residue	Standard undergrowth	Universal knives 
	Clearing, woody crop residues in place (stubble)	Straight universal knives 
	Field crop residue (maize seed, wheat straw,...): increased suction effect	Universal knives with stubble pallets 
ARTICULATED SCOOP FLAILS	Grass	Articulated scoop flails - a specific rotor* 
ARTICULATED SCOOP KNIVES	Grass	Articulated scoop knives 



RIGHT TOOL!

[illegible]

Technical specifications

GRASS shredders

		TL	BE	BKE		BKE REV	
		120 - 150 - 180	14 - 16 - 18 - 20	150 - 180	210 - 230 - 250	150 - 180	210 - 230 - 250
Working width (m/ft)		1.19/3'11" - 1.46/4'9" - 1.78/5'10"	1.40/4'7" - 1.60/5'3" - 1.80/5'9" - 2.00/6'7"	1.53/5'1" - 1.80/5'9"	2.14/7'2" - 2.29/7'5" - 2.50/8'2"	1.53/5'1" - 1.80/5'9"	2.14/7'2" - 2.29/7'5" - 2.50/8'2"
Transport width (m/ft)		1.35/4'5" - 1.60/5'3" - 1.92/6'4"	1.60/5'3" - 1.80/5'9" - 2.00/6'7" - 2.20/7'3"	1.71/5'6" - 2.00/6'5"	2.36/7'7" - 2.51/8'2" - 2.71/8'9"	1.71/5'6" - 1.99/6'5"	2.36/7'7" - 2.51/8'2" - 2.71/8'9"
PTO speed (min ⁻¹)		540	540 / 1,000	540		540 / 1,000*	
Minimum tractor power requirement (kW/hp)**		11-15-18/15-20-25	26-29-33-37/35-40-45-50	29-44/40-60	48-51-55/65-70-75	29-44/40-60	48-51-55/65-70-75
Maximum authorized DIN motor power (kW/hp) at 1,000 min ⁻¹ (or 540 if only version available)		22-22-26/30-30-35	48/65	59-74/80-100	74/100	59-74/80-100	74/100
Attachment		3-point, cat. 1	3-point, cat. 1 (14/16) 3-point, cat. 1 or 2 (18/20)	3-point, cat. 1 (150) 3-point, cat. 1 or 2 (180)	3-point, cat. 2	3-point, cat. 1 (150) 3-point, cat. 1 or 2 (180); front or rear	3-point, cat. 2; front or rear
Lateral offset (mm/in)		no offset (120) - 280/11" (150/180)	280/11" (14/16) - 450/18" (18/20)	350/14" - 450/18"	455/18"	350/14" - 450/18"	455/18"
Free wheel		◆ (integrated in the gearbox)					
Rotor drive		2 SPA belts	3 SPBX belts (2 on BE 14)	3 SPBX belts	4 SPBX belts	3 SPBX belts	4 SPBX belts
Rotor diameter (mm/in)		366/14"	374/15"	425/17"	450/18"	425/17"	450/18"
Rotor speed (min ⁻¹)	PTO 540 min ⁻¹	2,309	2,218	2,203		1,833	
	PTO 1,000 min ⁻¹	-	2,339	-		1,961*	
Linear speed of tools (m/s)	PTO 540 min ⁻¹	44.2	45.5	49	51.8	41	43.1
	PTO 1,000 min ⁻¹	-	46.6	-		43.6*	42.6*
Number of articulated scoop knives		24 - 30 - 36	-				
Number of hammer knives		-	20 - 24 - 28 - 32	18 - 20	24 - 26 - 28	18 - 20	24 - 26 - 28
Number of Y-knives		-		36 - 40	48 - 52 - 56	36 - 40	48 - 52 - 56
Counter blade		◆ (smooth, welded)			◆ (smooth, bolted)		
Side skids		-	◆	◇			
Height adjustment		by roller	by roller with fixed ends	by wheels or roller with fixed or removable ends		by semi-pivoting wheels or roller with fixed or removable ends	
Roller diameter (mm/in)		90/3.5"	160/6"				
Tyres		-			16 x 6.5 8 ply		
Weight with equipment (kg/lbs)		150/330 - 185/407 - 205/452	330/728 - 370/816 - 410/904 - 455/1,003	470/1,036 - 580/1,278	660/1,455 - 690/1,521 - 710/1,565	470/1,036 - 580/1,278	660/1,455 - 690/1,521 - 710/1,565

◆ standard ◇ option - not available

*Factory-assembled.

**Depending on work conditions and particularly on the volume and type of residues.



be strong, be **KUHN**

KUHN PARTS

DESIGNED AND MANUFACTURED
TO RIVAL TIME



KUHN foundries and forge as well as a high-level manufacturing process allow the production of spare parts to defy time. You can truly rely on our know-how and our genuine parts. Farmers benefit from our client support and logistics services via any KUHN PARTS warehouse, which provide quick and reliable repair solutions in cooperation with your nearest authorized KUHN dealer.



Technical specifications

MULTIPURPOSE shredders

		VKM	BP		BPR			BP
		210 - 240 - 280 - 305	28 - 30	240 - 280 -305	28 - 30	210 - 240 - 280 -305	280 PRO - 305 PRO	8300 - 8320 - 8340
Working width (m/ft)		2.09/6'10" - 2.37/7'10" - 2.79/9'2" - 3.03/9'11"	2.79/9'2" - 3.03/9'11"	2.37/7'8" - 2.79/9'2" - 3.03/9'11"	2.79/9'2" - 3.03/9'11"	2.10/6'11" - 2.37/7'8" - 2.79/9'2" - 3.03/9'11"	2.79/9'2" - 3.03/9'11"	8.30/27'3"
Transport width (m/ft)		2.25/7'5" - 2.55/8'4" - 2.98/9'9" - 3.21/10'6"	2.96/9'8" - 3.19/10'6"	2.55/8'4" - 2.99 or 3.10/9'9" or 10'2"(*) - 3.34/10'11"	2.95/9'8" - 3.19/10'6"	2.27/7'5" - 2.55/8'4" - 3.00/9'10" - 3.34/10'11"	2.96/9'8" - 3.34/10'11"	3.00/9'10"
PTO speed (min ⁻¹)		540/1,000					1,000	
Minimum tractor power requirement (kW/hp)**		51-59-66-74/ 75-80-90-100	66-74/ 90-100	59-66-74/ 80-90-100	66-74/ 90-100	51-59-66-74/ 75-80-90-100	70-81/ 95-110	110-147-147 /150-200-200
Maximum authorized DIN motor power (kW/hp) at 1,000 min ⁻¹ (or 540 if only version available)		96-96-110-110 / 130-130-150-150	110/150	129/175	110/150	129/175	169/230	221-243-243 /300 -330-330
Attachment		3-point, cat. 2			3-point, cat. 2 - reverse drive - fixed or floating		3-point, cat. 2 or 3 - front or rear - fixed or floating	3-point, cat. 2 or 3
Lateral offset (mm/in)		520/20.5" (210) - 580/22.8"	450/17'7"	580/22.8"	450/17.7"	520/20.5" (210) - 580/22.8"	580/22.8"	-
Free wheel		◆ (integrated in the gearbox)						
Rotor drive (no. of belts)		3 - 3 - 4 - 4	4	3 - 5 - 5	4	3 - 3 - 5 - 5	5	5 + 5
Rotor diameter (mm/in)		465/18.3"						
Rotor speed (min ⁻¹)	PTO 540 min ⁻¹	1,833					-	-
	PTO 1,000 min ⁻¹	1,960					1,870	2,052
Linear speed of tools (m/s)	PTO 540 min ⁻¹	48 (210/240) - 44 (280/305)	44	45	44	45	-	-
	PTO 1,000 min ⁻¹	48 (280/305)	48*				46	50
Number of hammer knives		22 - 24 - 28 - 32	28 - 32	24 - 28 - 32	28 - 32	22 - 24 - 28 - 32	28 - 32	64
Number of universal knives		44 - 48 - 56 - 64	56 - 64	48 - 56 - 64	56 - 64	44 - 48 - 56 - 64	-	
Number of flail knives		-				54 - 60 - 72 - 78	-	
Counter blades		◆ (1 notched, 1 smooth)						
3rd counter blade		-					◇	
Side skids		◆	◇	◆				
Height adjustment		semi-pivoting wheels or roller with removable ends	roller with removable ends or semi-pivoting wheels		roller with fixed or removable ends	roller with removable ends		
Roller diameter (mm/in)		180/7"	220/9"					
Tyres	wheels with non-adjustable track	185/70 R13	185-60 R14	185/75-15	-			
	wheels with adjustable track	145-10 (210/240) - 185/70 R13 (280/305)						
Weight with equipment (kg/lbs)		870/1,918 - 910/2,006 - 960/2,116 - 990/2,182	890/1,958 - 920/2,024	820/1,962 - 900/1,984 - 950/2,094	990/2,182 - 1,120/2,460	870/1,914 - 950/2,090 - 1,020/2,249 - 1,100/2,425	1,150/2,535 - 1,230/2,712	2,630/5,798

◆ standard ◇ option - not available

*Factory-assembled.

**Depending on the country.

***Depending on work conditions and particularly on the volume and type of residues.

Some models are not available in all countries. Basic and optional equipment vary according to the country. Please check with your local dealer.

Technical specifications

FIELD shredders

		BK	RM		BC	BCR	RMS	WS
		230 - 280 - 320	240 - 280 - 320 - 400 - 450	480 R - 610 R	2800 - 3200	2800	820	320 BIO
Working width (m/ft)		2.30/7'7" - 2.80/9'2" - 3.20/10'6"	2.36/7'9" - 2.80/9'2" - 3.23/10'7" - 4.01/13'2" - 4.52/14'10"	4.80/15'9" - 6.10/20'	2.79/9'2" - 3.23/10'7"	2.79/9'2"	8.20/26'11"	3.23/10'7"
Transport width (m/ft)		2.50/8'2" - 3.00/9'10" - 3.47/11'5"	2.55/8'4" - 3.00/9'10" - 3.48/11'5" - 4.35/14'3" - 4.93/16'2"	2.50/8'2"	2.99/9'10" - 3.47/11'5"	2.99/9'10"	lengthways transport - drawbar	3.48/11'5"
PTO speed (min ⁻¹)		540 - 540/1,000 - 1,000	1,000 (540/1,000 on RM 240)		1,000			
Minimum tractor power requirement (kW/hp)*		51-66-81/70-90-110	66-74-88-96-110/90-100-120-130-150	118-132/160-180	74-88/100-120	74/100	191/260	110/150
Maximum authorized DIN motor power (kW/hp) at 1,000 min ⁻¹ (or 540 if only version available)		92-110-129/125-150-175	110-125-147-205-206/150-170-200-280-280	257/350	147-221/200-300	147/200	331/450	221/300
Attachment		3-point, cat. 2	3-point, cat.2 - semiautomatic (fixed on RM 240/280/320**)	3-point, cat. 2 or 3	3-point, cat. 2		3-point, cat. 3 or 4 - quick-hitch compatible	3-point, cat. 2 or 3 - fixed or floating
Free wheel		◆ (integrated in the gearbox)						
Rotor drive		4 - 4 - 5 SPBX belts	4 - 4 - 3+3 - 4+4 - 5+5 SPBX belts	4+4 - 5+5 SPBX belts	4 - 3+3 SPBX belts	4 SPBX belts	6+6 SPCX belts	5-strand Powerband
Rotor diameter (mm/in)		620/24.4" - 647/25" (280-320)	647/25" (240-320) - 703/28" - 730/29"	620/24"	647/25"		730/29"	647/25"
Rotor speed (min ⁻¹)	PTO 540 min ⁻¹	2,083 (230) - 1,840 (280)	1,833 (240)	-				
	PTO 1,000 min ⁻¹	1,960 (280) - 1,758 (320)	1,960 - 1,680 - 1,758 - 1,400 - 1,560	1,714	1,758 - 1,747	1,758	1,721	1,117
Linear speed of tools (m/s)	PTO 540 min ⁻¹	67.6 (230) - 62 (280)	62 (240)	-				
	PTO 1,000 min ⁻¹	66.3 (280) - 59.5 (320)	66 - 57 - 60 - 64 - 60	56	60		66	38
Number of long hammer knives		26 - 32 - 36	28 - 32 - 36 - 44 - 52	56 - 68	32 - 36	32	-	-
Number of Y-knives with stubble pallets		52+26 - 64+32 - 72+36	56+28 - 64+32 - 72+36 - 88+44 - 104+52	112+56 - 136+68	64+32 - 72+36	64+32	-	-
Number of Y-knives		-					264	72
Side skids		◇	◆					-
Counter blades		◆ (1 smooth, 1 notched)	◆ (1 smooth)					-
Height adjustment		semi-pivoting wheels or rollers	semi-pivoting wheels or rollers (rigid twin wheels on trailed RM 450)		roller with removable ends or semi-pivoting wheels		4 pivoting support wheels	roller with removable ends
Roller diameter (mm/in)		220/9"					-	220/9"
Tyres		185/60R14	195/65-15 (240-280) 195/75-14 (320-450)	10.0/80-12 10 PR	10.0 x 80 - 12		10.0/80-12 10 PR	-
Weight with equipment (kg/lbs)		950/2,094 - 1,100/2,420 - 1,410/3,108	1,195/2,634 - 1,400/3,086 - 1,820/4,012 - 2,190/4,828 - 2,343/5,165	2,600/5,720 - 3,200/7,054	1,330/2,930 - 1,560/3,440	1,900/4,190	6,600/14,550	1,800/3,960

◆ standard ◇ option - not available *Depending on work conditions and particularly on the volume and type of residues. ** Depending on country and configuration.

Optional equipment

Optional equipment BE 10: front or reverse drive station adaptation kit - special varnish.

Optional equipment BKE/BKE REV: adjustable skid set - sheet metal lining - pivoting support wheels – lighting and signalling.

Optional equipment VKM: hydraulically controlled offset - roller with removable ends - roller scraper - pair of support wheels fitted on the side walls - pair of wheels - collecting rake beam without collecting tines - collecting rake tines– lighting and signalling.

Optional equipment BP 10: set of side stabilizing skids – lighting and signalling.

Optional equipment BP 100: hydraulically controlled offset - lateral support wheels - roller with removable ends - lighting and signalling.

Optional equipment BPR 100: pivoting front wheels - double free wheel gearbox - input shaft extension set - special varnish.

Optional equipment BPR 100 PRO: pivoting front wheels - double free wheel gearbox - input shaft extension set - additional bolted counter-blade - special varnish.

Optional equipment BP 8300: additional bolted notched counter-blade – lighting and signalling.

Optional equipment BP 8340: additional counter-blade.

Optional equipment RM: reinforced wheels - adjustable side skids - lighting and signalling.

Optional equipment RM R: lighting and signalling.

Some models are not available in all countries. Basic and optional equipment vary according to the country. Please check with your local dealer.

KUHN SERVICES*

*Not all services are available in every country.

MAXIMIZE THE USE AND PRODUCTIVITY OF YOUR KUHN EQUIPMENT

KUHN sos order

Express spare parts service 24/7

You urgently need spare parts? With KUHN sos order benefit from express delivery seven days a week, 365 days a year. Thus, you can minimize machine downtime considerably and increase your work output.

KUHN protect +

The choice of professionals!

Benefit from 36 months in complete serenity because of KUHN's protect + warranty extension. You can concentrate exclusively on your work and the performance of your machine. Because this is what you expect, when investing in high-tech machinery.

KUHN i tech

For ever quicker repairs!

An unexpected technical problem always occurs at the wrong time. Your KUHN dealer can support you quickly and efficiently thanks to KUHN i tech. With this 24/7 online service, a quick and exact diagnosis is possible.

KUHN finance

Invest rationally!

New machine necessary, financing unsure? Modernize your equipment and develop your farm with KUHN finance, in total safety and according to your needs and demands. We offer custom-made finance solutions, adapted to your requirements.



FOR EACH USE A SHREDDER!

	Series	Type of linkage		Grassy areas	Pasture	Fallow land	Intermediate crops and crop residues)
		Front	Rear				
Grass	TL		✓	✓			
	BE 10	✓	✓	✓	✓	✓	
	BKE / BKE REV	✓ (BKE rev)	✓	✓	✓	✓	
Multipurpose	VKM		✓		✓	✓	(✓)
	BP 10/BPR 10	✓ (BPR 10)	✓		✓	✓	
	BP 100/BPR 100	✓ (BPR 100)	✓		✓	✓	(✓)
	BPR 100 PRO	✓	✓		✓	✓	(✓)
	BP 8300/BP 8340	✓	✓		✓	✓	(✓)
Crops	BK		✓		(✓)	✓	✓
	RM / RM R		✓		(✓)	(✓)	✓
	BC / BCR 1000	✓	✓ (BCR)		(✓)	(✓)	✓
	RMS 820		✓			(✓)	✓
Energy crops	WS 320 BIO	✓					✓

You have thought that those are all shredders and mowers KUHN has to offer? There are more to discover.



1. Vineyard and orchard shredders 2. Front-mounted maintenance shredders 3. Offset arm verge shredders 4. Professional-duty road-side mowers.

For more information about your nearest KUHN dealer, visit our website
www.kuhn.com



Visit us on our YouTube-channels.



www.kuhn.com

Your KUHN dealer

KUHN S.A.

4 Impasse des Fabriques - BP 50060
 F-67706 Saverne CEDEX - FRANCE

KUHN NORTH AMERICA, INC.

1501 West Seventh Avenue - Brodhead,
 WI 53520 - USA

KUHN FARM MACHINERY PTY. LTD

313-325 Foleys Road - Deer Park, VIC, 3023 - AUSTRALIA

KUHN FARM MACHINERY (U.K.) LTD

Stafford Park 7 - GB TELFORD/ SHROPS TF3 3BQ

Information given in this document is only for information purposes and is non-contractual. Our machines are in compliance with regulations in force in the country of delivery. In our literature, and for improved illustration of certain details, some safety devices may not be in operating position. When operating these machines, these devices must be in position in accordance with the requirements indicated in the operator's manuals and assembly manuals. Respect the tractor gross vehicle weight rating, its lift capacity and maximum load per axle and tyres. The tractor front axle load must always comply with the regulations of the country of delivery (In Europe, it must reach minimum 20 % of the tractor net weight). We reserve the right to change any designs, specifications or materials listed without further notice. Machines and equipment in this document can be covered by at least one patent and/or registered design. Trademarks cited in this document may be registered in one or several countries.

Also find KUHN on

